



## Palmwoods, QLD

1/28 Bonaparte Place

**3**  
BED

**2**  
BATH

**1**  
CAR

positive property people  
- Caloundra -

### Quiet Location, Brand New!

Perfectly positioned in a quiet elevated cul-de-sac in Palmwoods, you will find this brand new home surrounded by bushland behind. It boasts close proximity to the Bruce Highway and its central location to the Sunshine Coast makes this a popular destination.

The home is tiled throughout the main living areas and offers screens, fans and air conditioning. The main bedroom features air conditioning, built-in robe and ensuite. The other 2 bedrooms are located at the opposite end of the home and offer fans and built-ins.

The spacious kitchen offers plenty of bench space, stainless steel oven, dishwasher and glass cook-top. Flowing on from the kitchen is the tiled lounge and dining areas which flow out on to the large covered patio area, and no rear neighbour.

**\$430 per week**

**Contact:** Hannah Reed

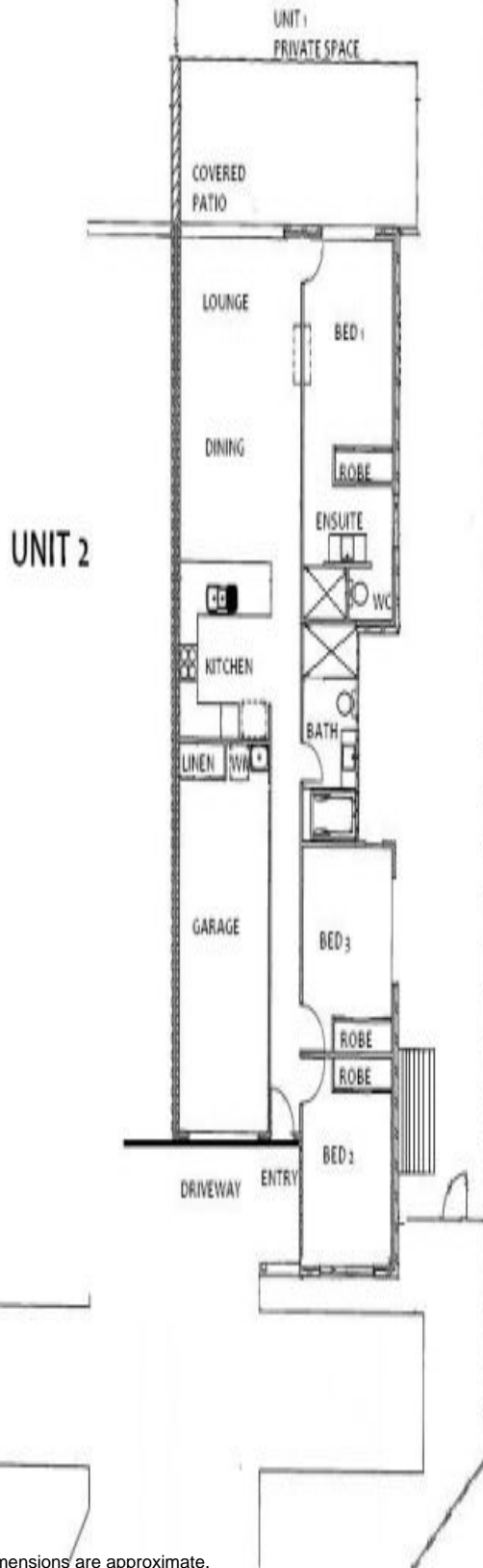
**Type:** Semi Detached

**Date Available:** 06/03/2019

**Bond:** \$1720

<http://www.positivepropertypeople.com.au>

FLOORPLAN UNIT 1/28  
BONAPARTE PLACE



Plans shown are only indicative of layout. Dimensions are approximate.

**Palmwoods, QLD**  
1/28 Bonaparte Place