



Palmwoods, QLD
2/28 Bonaparte Place

3 BED
2 BATH
1 CAR



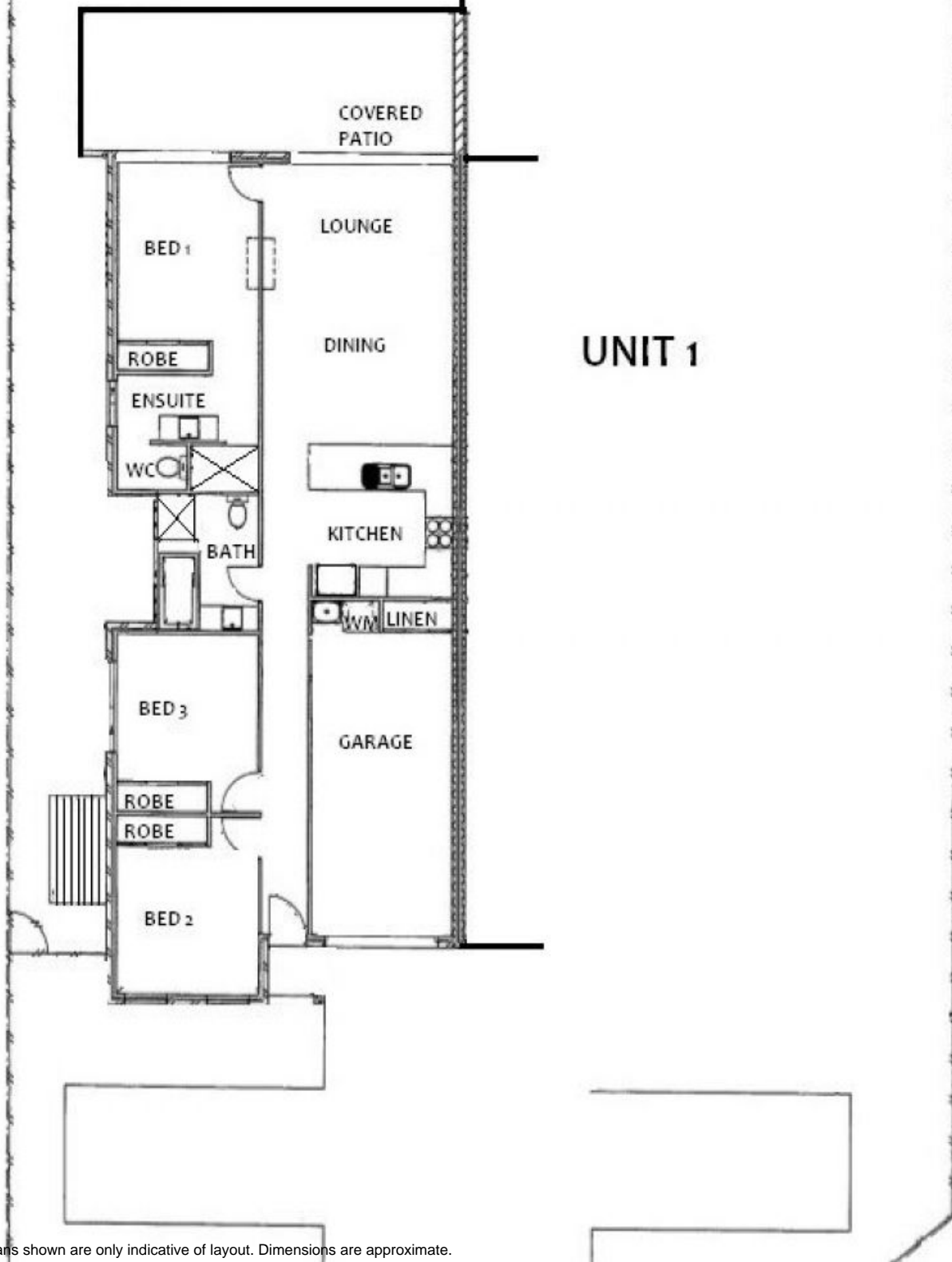
Great Location, Leafy Bush Backdrop!
Perfectly positioned in a quiet elevated cul-de-sac in Palmwoods, you will find this near new home with bushland behind. It boasts close proximity to the Bruce Highway and its central location to the Sunshine Coast makes this a popular destination.

\$419,000
Contact: Dave Cooper
0499 004 166
Type: Semi Detached
Land: 396m2
<http://www.positivepropertypeople.com.au>

The home is tiled throughout the main living areas and offers screens, fans and air conditioning. The King size main bedroom features air conditioning, built-in robe and ensuite. The other 2 Queen size bedrooms are located at the opposite end of the home and offer fans and built-ins.

The spacious kitchen offers plenty of bench space, overhead cupboards, stone benchtops, plumbed fridge space, stainless steel oven, dishwasher and glass cook-top. From the kitchen, the air conditioned tiled lounge and dining areas flow out on to the large covered patio area, and you'll love no rear neighbours!

FLOORPLAN UNIT 2/28 BONAPARTE PLACE



Plans shown are only indicative of layout. Dimensions are approximate.

Palmwoods, QLD
2/28 Bonaparte Place